

Special Features

- AC coupled Input & Output
- Limiter installed at the input. Protects Amplifier from moderated level ESD in case the amplifier is installed directly to the Antenna in EMC Applications
- The limiter allows amplifier to handle +20dBm CW.

Standard Features

- Unconditionally Stable at all temperatures
- Internally Regulated DC Voltage
- Field Replaceable 2.92mm K connectors
- Excellent Group Delay and Phase Linearity
- 0.009 inches diameter RF In/Out feed through
- 3 Year Warranty

Options

- Optimized Performance over Selected Bandwidth
- Improved Gain Flatness
- Lower Noise Figure
- Improved IN and OUT VSWR
- Gain and Phase matching
- Hermetically Sealed Package



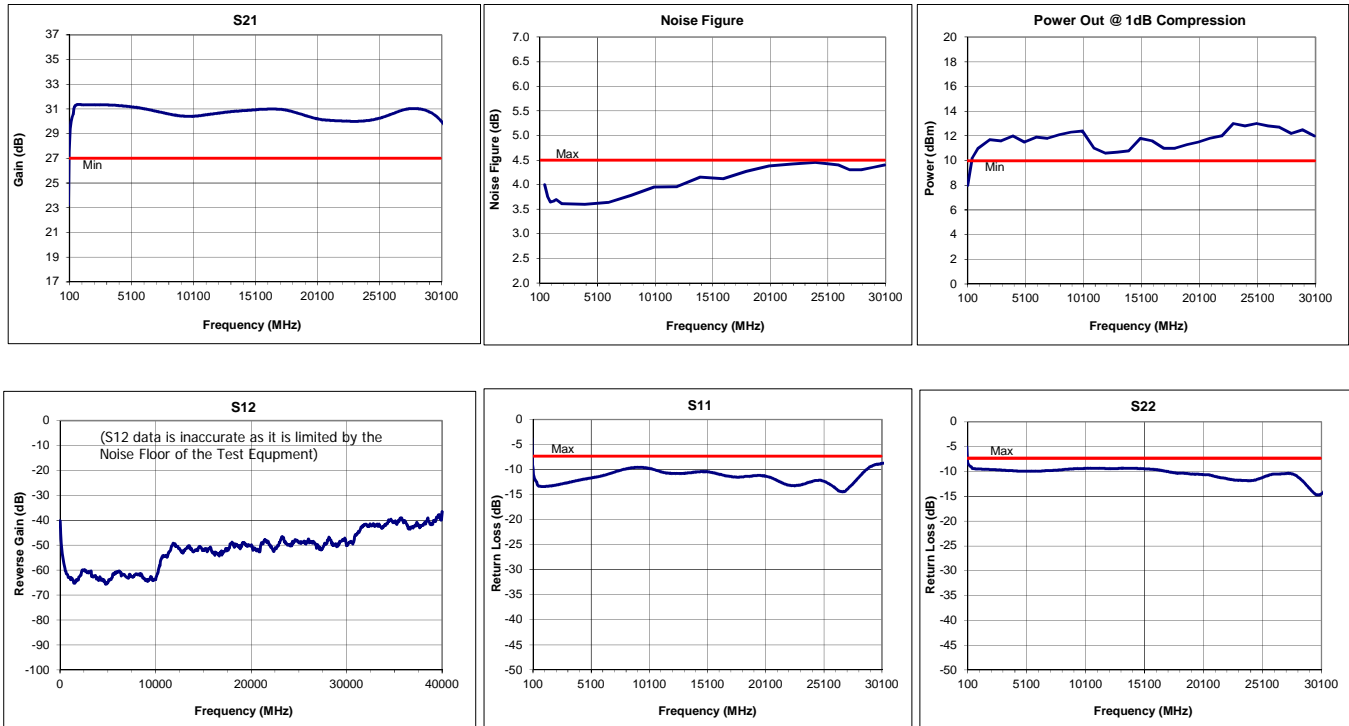
****CAUTION:** Gallium Arsenide Integrated Circuits are sensitive to electrostatic discharge (ESD) and can be damaged by static electricity. Proper ESD control techniques should be used when handling these devices.

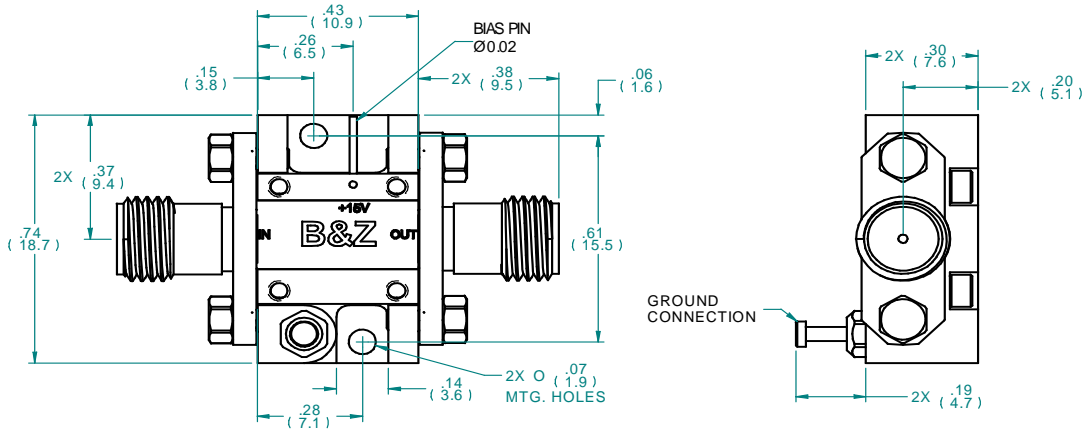
Specifications (23 °C)

Parameter	Min	Typ	Max	Units
Frequency Range	0.1	-	30	GHz
Noise Figure*	-	-	4.5	dB
Gain	27	30	-	dB
Gain Flatness (+/-)	-	± 1.5	± 2.0	dB
P1 Output Power	+10	+11	-	dBm
Input VSWR	-	-	2.5:1	
Output VSWR	-	-	2.5:1	
Operating Temperature	-55	-	+85	°C
Non-Operating Temp Range	-65	-	+125	°C
RF Input Power (no-damage)	-	-	+20	dBm
Humidity (non-condensing)	-	-	95	%
Voltage	+15	+15	+15	VDC
Current	-	180		mA
Input Impedance	50			Ohms
RF Connector (IN/ OUT)	2.92mm - Female			
Dimensions	29.9 x 18.7 x 7.6			mm

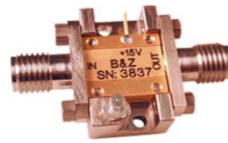
* Noise Source used for measurement from 0.1GHz to 40 GHz is HP346C-K01 .
NF Uncertainty (approx. 0.3 dB), 0.2 dB due to ENR of HP 346C-K01; and 0.1 dB, due to the gain modulation of the unit, caused by the HP 346C-K01 source impedance change in the ON and OFF state. Noise Figures and other parameters degrade below 500 MHz. Call to discuss.

Typical Data

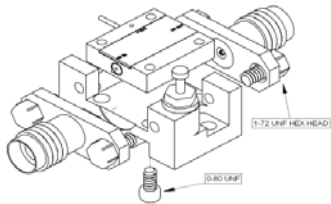




Approx. Actual Size



Mounting Drawing



Drop In

